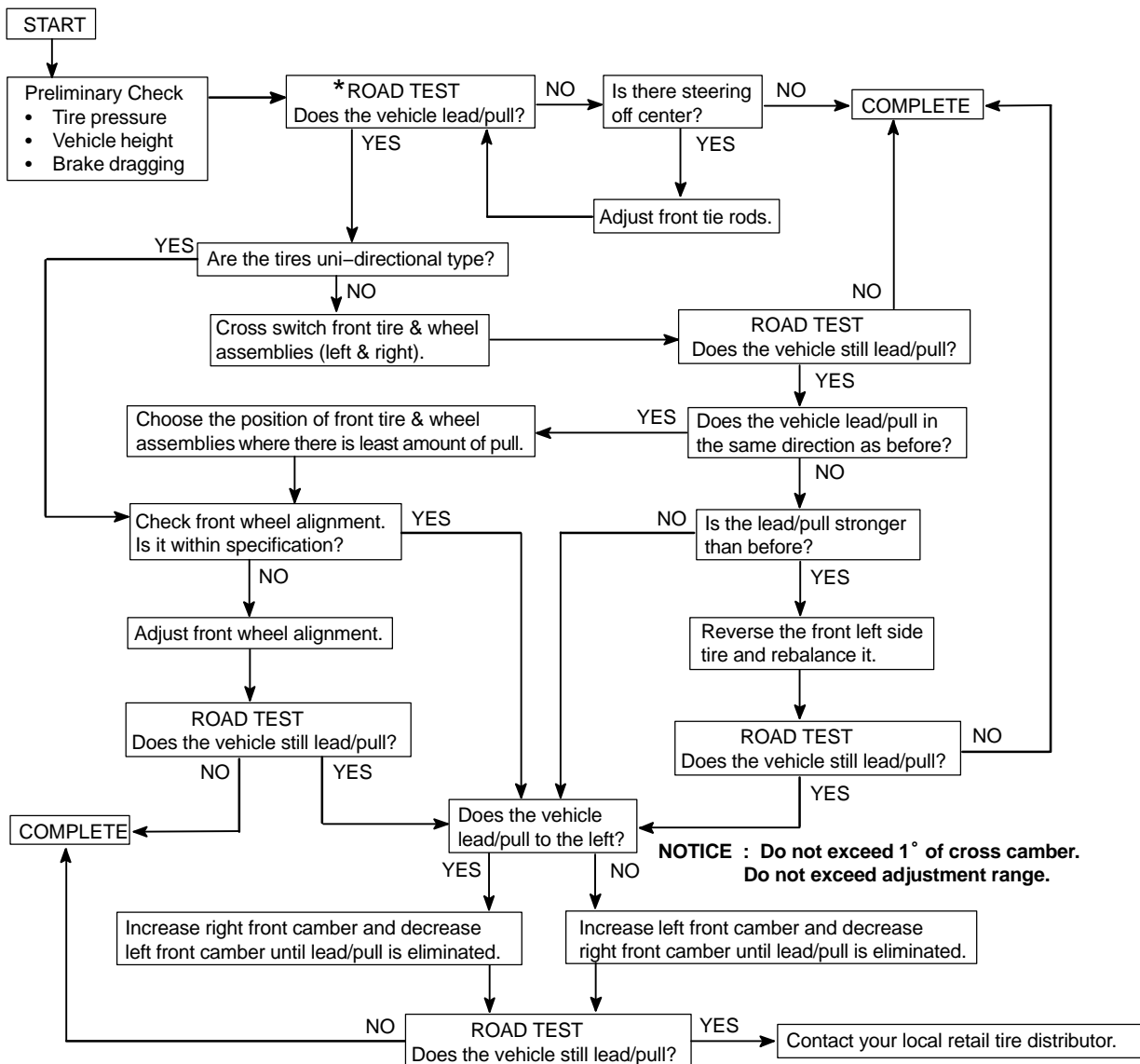


## REPAIR PROCEDURES

**HINT:**

This is a flow chart for vehicle pull.



\* Select a flat road where the vehicle can be driven in a straight line for 100 meters at a constant speed of 35mph. Please confirm safety and set the steering wheel to its straight position. Drive the vehicle in a straight line for 100 meters at a constant speed of 35mph without holding the steering wheel.

- (1) The vehicle can keep straight but the steering wheel has some angle. —→ STEERING OFF CENTER (See page [SR-10](#))
- (2) The vehicle cannot keep straight. —→ STEERING PULL